

XXIII RALLYE GERNIKA-LUMO

7-8 DE OCTUBRE DE 2016

CAMPEONATO VASCO DE RALLYES

**GUIA RECONOCIMIENTOS
GERNIKA-LUMO 2016**

EZAGUTZA GIDA

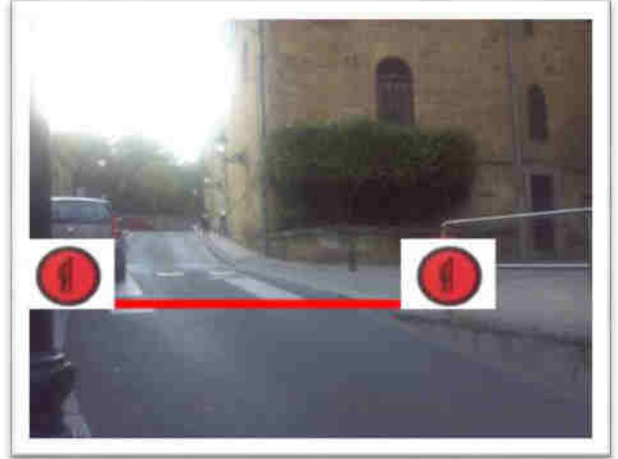
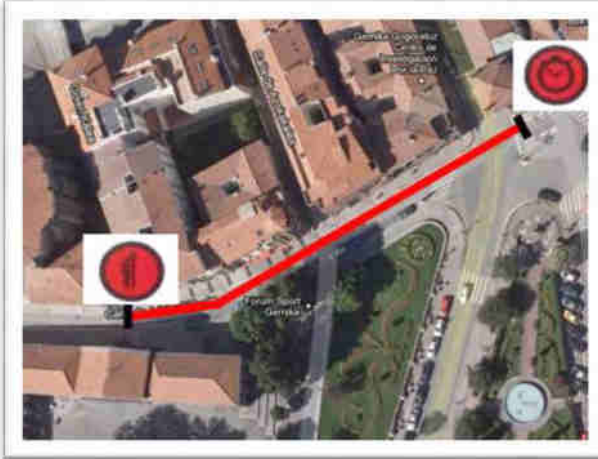


TRAMO CRONOMETRADO: GERNIKA-LUMO-GERNIKA

Salida: BI-4215 - Calle Adolfo Urioste

Llegada: P.K.: 33,80 BI-3213

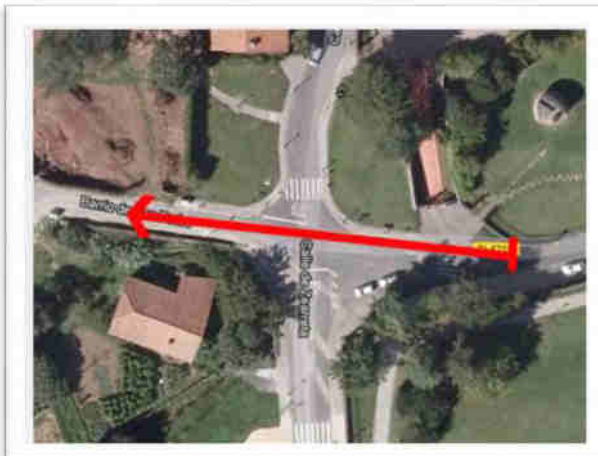
SALIDA



CRUCE ANDRA MARI



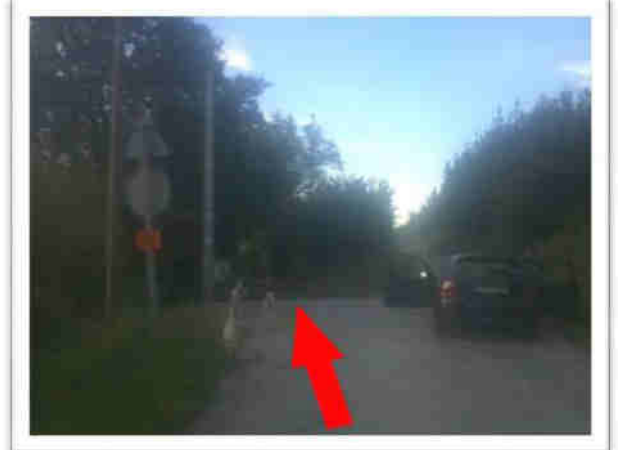
CRUCE UDETXEA



CRUCE LUMO



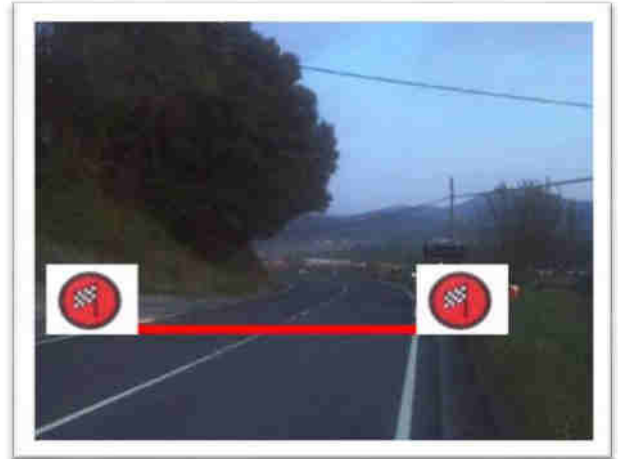
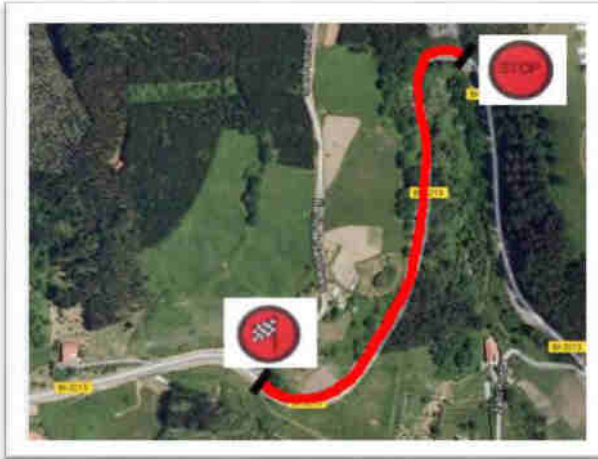
CRUCE ELORRIETA



CRUCE BI-3213



META

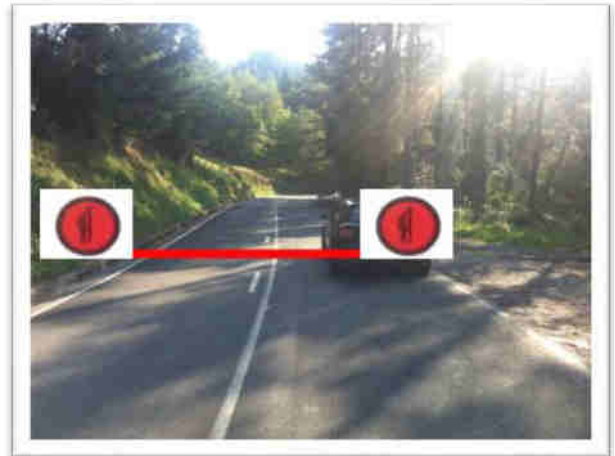
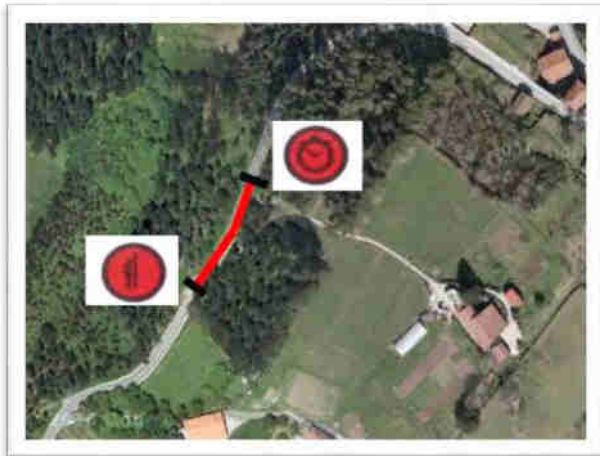


TRAMO CRONOMETRADO: MUNITIBAR-URRUTXUA-ZUGASTIETA

Salida: P.K.: 37,40 BI-3231

Llegada: P.K.: 26,80 BI-3332

SALIDA



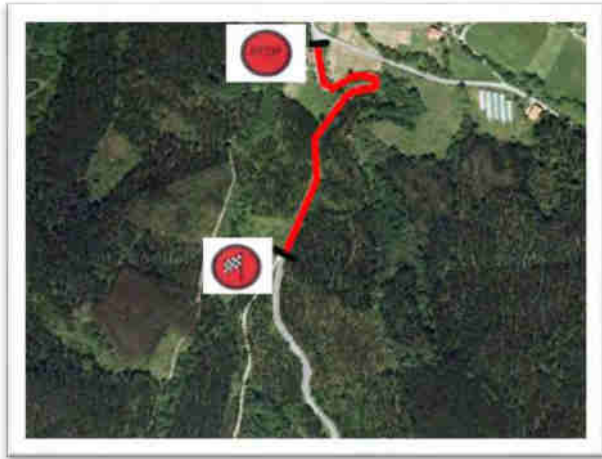
CRUCE URRUTXUA



CRUCE MONTECALVO



META

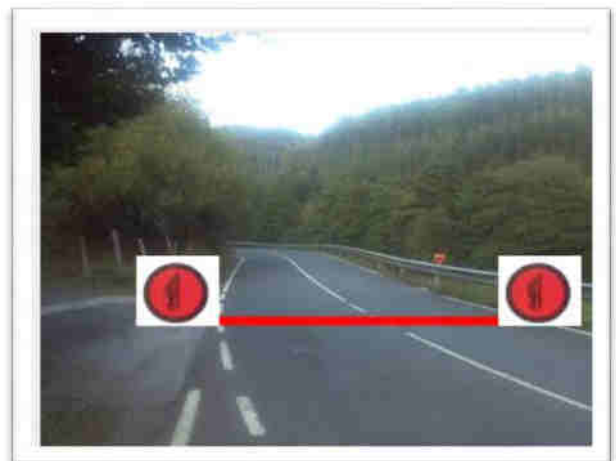
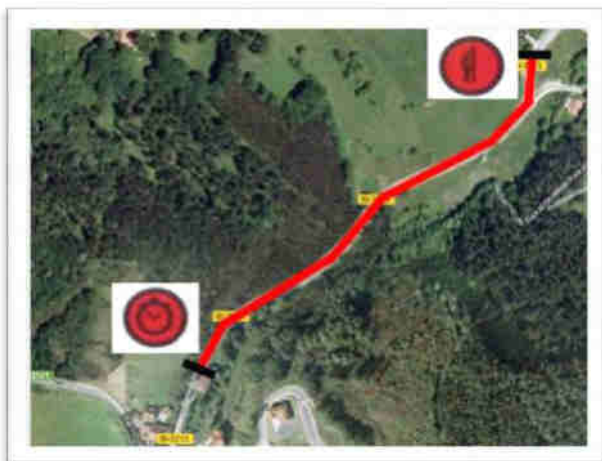


TRAMO CRONOMETRADO: OLABARRI-GERNIKA

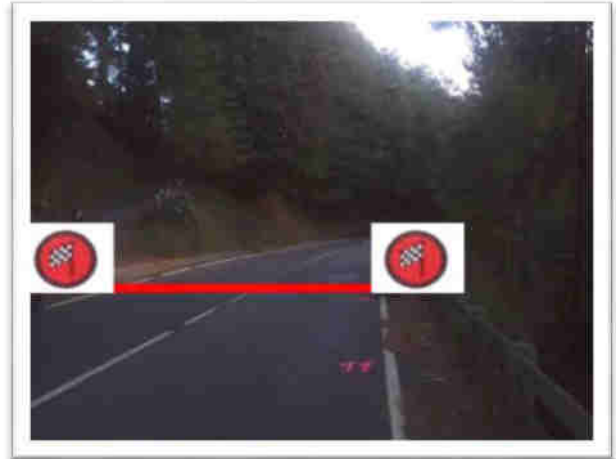
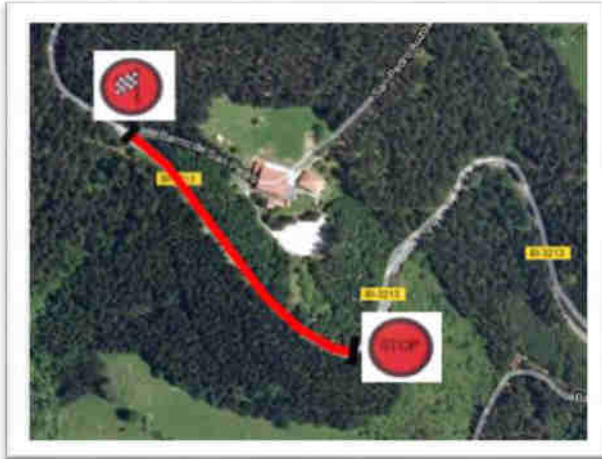
Salida: P.K.: 25,90 BI-3213

Llegada: P.K.: 32,70 BI-3213

SALIDA



META



TRAMO CRONOMETRADO: AJANGIZ-MARMIZ-ARRATZU

Salida: P.K.: 32,65 BI-3224

Llegada: P.K.: 38,80 BI-2224

SALIDA



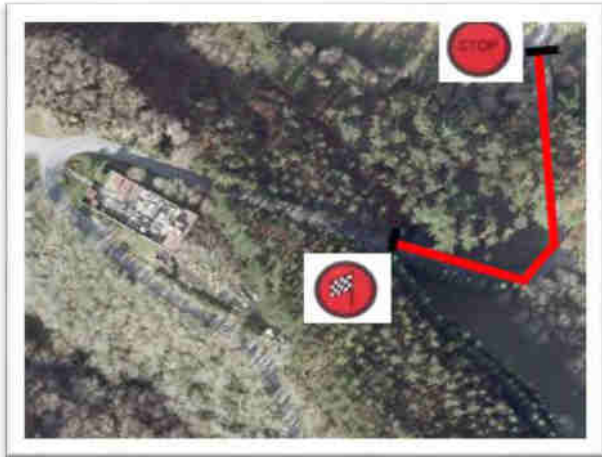
CRUCE MARMIZ



CRUCE IBARTXU



META

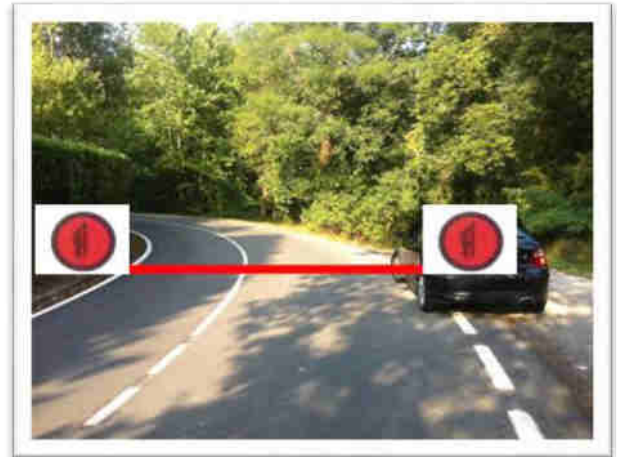
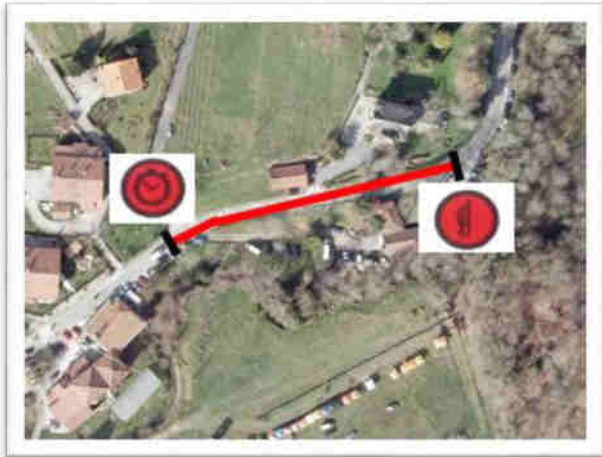


TRAMO CRONOMETRADO: BELENDIZ-NABARNIZ

Salida: P.K.: 36,50 BI-3242

Llegada: P.K.: 42,30 BI-3242

SALIDA



META

